

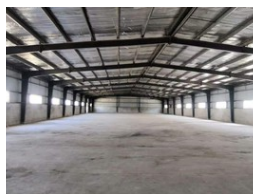


Elvira Brentnall
+260968 336061
elvira@seeff.com

Contact **Lusaka**

+260 954152925

Foxdale Court 114
1st Floor, Second Building
609 Zambezi Road
Roma
Lusaka
10101



ZMW45 per m²

Gross Monthly Rental ZMW91,500 Excl. VAT

0 0

Warehousing - factory or storage -

Warehousing block in Kenneth Kaunda Int. Airport area.
Located Away from Industrial Area but in close proximity to the Airport.
Available now - Various units.
Size can be adjusted to clients needs.
Rental is negotiable, suitable for factory & storage.
Power backup on site, secure & fenced.
Good tar road access.

Features

Zoning	Commercial			
Interior		Exterior		Sizes
Power 3 Phase	Yes	Security	Yes	Floor Size
				2,125m ²