

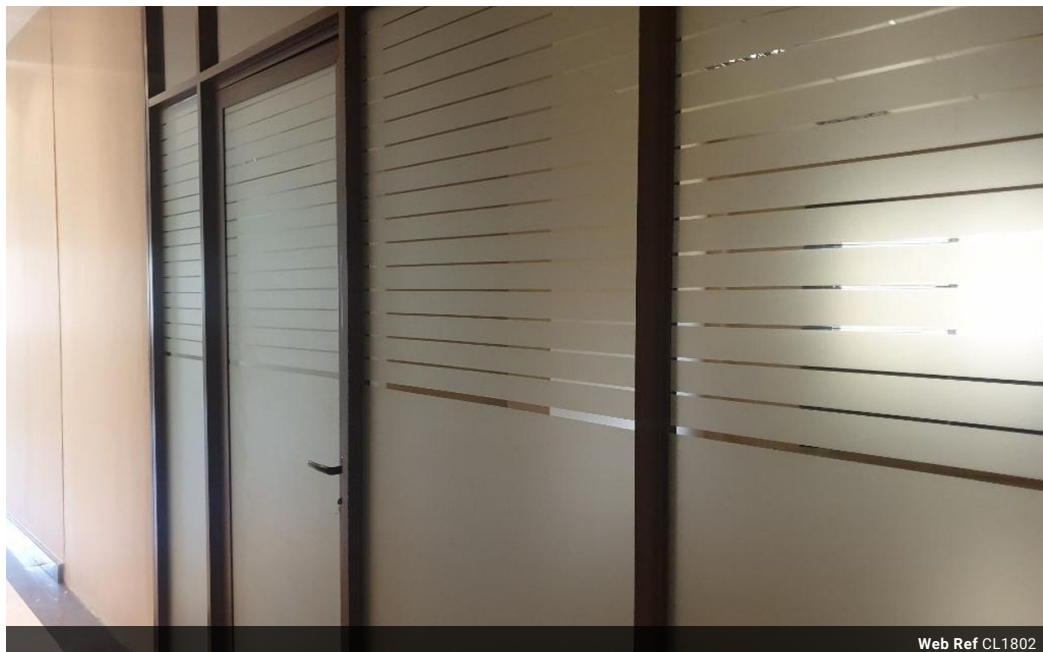


Elvira Brentnall
0968 336061
elvira@seeff.com

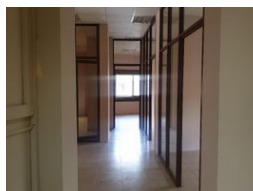
Contact **Lusaka**

260 954152925

Foxdale Court 114
1st Floor, Second Building
609 Zambezi Road
Roma
Lusaka
10101



Web Ref CL1802



POA

0 9

Rhodespark Office Block

Neat office space - Central Location - Rhodespark
Spread over 2 floors and about 17 Individual offices.
Each floor has gents and ladies as well as kitchen area.
Offices are very spacious and suitable for executives.
Close to Manda Hill as well as Levy Shopping Malls.

Features

Zoning Commercial

Interior

Air Conditioning Yes

Exterior

Security
Open Parking Bays
Parking Ratio

Yes
9
2 bays / 100
m²

Sizes

Floor Size 560m²

