



**Kelvin Mwansa**  
+260 969 627 085  
kelvin.mwansa@seeff.com

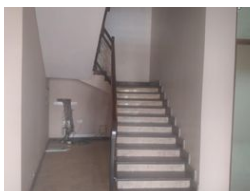
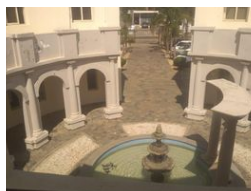
Contact **Lusaka**

**260 954152925**

Foxdale Court 114  
1st Floor, Second Building  
609 Zambezi Road  
Roma  
Lusaka  
10101



Web Ref CL182



**ZMW450 per m<sup>2</sup>**

**Gross Monthly Rental ZMW100,000 Excl. VAT**

0 0

**560sqm double storey Office space in Rhodespark**

This is a double storey office space. The building has a total lettable space of 830 sqm totaling 16 office cubicles. 8 offices on the ground floor and 8 offices on the first floor.

T

The office is well located in Rhodespark Close to the central business district of Lusaka with a number of amenities surrounding the office spaces

Asking rent: \$12/sqm

## Features

**Zoning** Commercial

### Interior

Air Conditioning	Yes
Power 3 Phase	Yes

### Exterior

Security	Yes
Parking Ratio	2.5 bays / 100 m <sup>2</sup>

### Sizes

Floor Size	830m <sup>2</sup>
------------	-------------------