



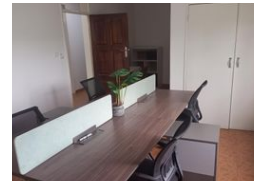
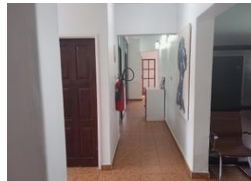
Kelvin Mwansa
+260 969 627 085
kelvin.mwansa@seeff.com

Contact **Lusaka**
260 954152925

Foxdale Court 114
1st Floor, Second Building
609 Zambezi Road
Roma
Lusaka
10101



Web Ref CL222



POA

0 0

FURNISHED OFFICE SPACES

Excellent location in the Olympia area close amenities such as Manda Hill Mall, Arcades, East Park, etc.

The offices are furnished and include access to facilities such as boardroom. Lease is for a minimum of six months and includes taxes, wifi, security, etc.

Features

Zoning Commercial

Sizes
Floor Size 200m²