



**Elvira Brentnall**  
0968 336061  
elvira@seeff.com

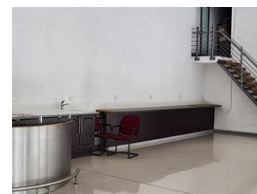
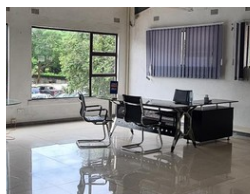
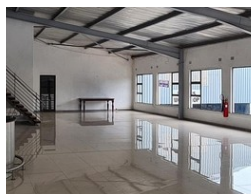
Contact **Lusaka**

**260 954152925**

Foxdale Court 114  
1st Floor, Second Building  
609 Zambezi Road  
Roma  
Lusaka  
10101



Web Ref CL118



**ZMW250 per m<sup>2</sup>**

**Gross Monthly Rental ZMW2,200,000 Excl. VAT**

0 0

## Offices & Showroom

Near American Int. School,  
Office space of about 400 to 1000 sqm available, including showroom- which all could be converted and adjusted.  
Reasonable rates,  
Good location - along busy road,  
Preferred 2 tenants maximum or one company ideally.  
Space is spread over first floor.  
Access for the loading of heavy equipment provided...

## Features

**Zoning** Commercial

### Interior

Air Conditioning Yes  
Power 3 Phase Yes

### Exterior

Security Yes

### Sizes

Floor Size 1,000m<sup>2</sup>  
Land Size 20,000m<sup>2</sup>