



Alick Phiri
0763549295
alick.phiri@seeff.com



Sekani Kayela
260962818988

sekani.kayela@seeff.com



Bryan Mushota Tembo
+260966767405

bryan.mushota@seeff.com

Contact **Lusaka**

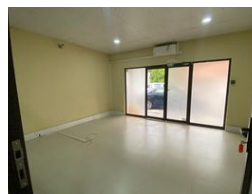
+260 954152925

Foxdale Court 114
1st Floor, Second Building
609 Zambezi Road
Roma
Lusaka
10101

FEATURED



Web Ref CL336



POA

0 0

300 square metres office units in Kabulonga

These are various office spaces located in Kabulonga on Reedback Road. The units are as follows;
two units of 300 sqm each;
five units of 250 sqm each;
two units of 246 sqm each;
one unit of 200 sqm;
one unit of 154 sqm;
one unit of 63 sqm;

Most of the offices are already partitioned with rest rooms for both male and female and a kitchen.

Nearby amenities include kabulonga boys and girls, centro shopping mall kabulonga and Melissa supermarket

Rate: USD15/sqm

Features

Zoning Commercial

Sizes

Floor Size 300m²