

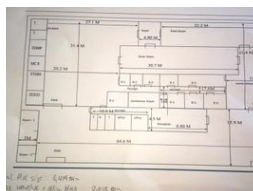


Mwila Sheila Mulundika
+260979459259
mwila.mulundika@seeff.com

Contact **Lusaka**

+260 954152925

Foxdale Court 114
1st Floor, Second Building
609 Zambezi Road
Roma
Lusaka
10101



ZMW46.9 per m² Gross Monthly Rental ZMW96,000 Excl. VAT

0 0

COMMERCIAL PROPERTY FOR RENT - KITWE

The property is located in the Light Industrial area with easy access into the property from the main road; the property was formally used as a factory; property includes warehouse/storage space plus offices

Total Plot Size: 3,419sqm
Total Warehouse & Office space: 2,048sqm

Features

Zoning Commercial

Interior
Power 3 Phase Yes

Sizes
Floor Size 2,048m²
Land Size 3,419m²