



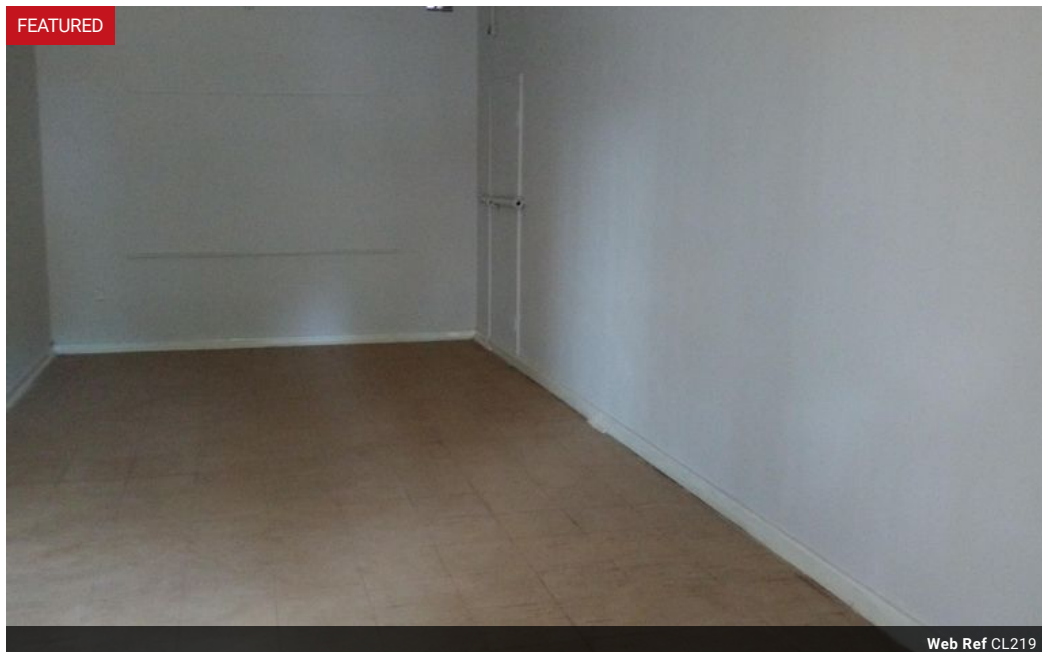
Mwila Sheila Mulundika
0979459259
mwila.mulundika@seeff.com

Contact **Lusaka**

260 954152925

Foxdale Court 114
1st Floor, Second Building
609 Zambezi Road
Roma
Lusaka
10101

FEATURED



Web Ref CL219



ZMW167 per m²

Gross Monthly Rental ZMW50,000 Excl. VAT

0 0

OFFICE SPACE WITH SPACIOUS BACKYARD - AVAILABLE FOR RENT

Office space includes: 3 offices, 1 open plan office, reception area, toilets, spacious back yard with workshop area, situated in the light industrial area and approximately 2.5km to the north western side of the Central Business District of Kitwe.

Key factors on-site:

- # ZESCO mains electricity supply is connected to the property
- # Water supply is obtained from the Nkana Water and Sewerage Company Ltd
- # The property is enclosed in a concrete block boundary wall to three sides and bordered by buildings to the front side and accessed by two sets of double opening steel gates
- # Sewage disposal from the property is to the Nkana Water and Sewerage Company Ltd mains sewer line
- # Tarred road frontage

Features

Zoning	Commercial		
Exterior		Sizes	
Security	Yes	Floor Size	300m ²