



Tina Mudenda
+260967350738
tina.mudenda@seeff.com

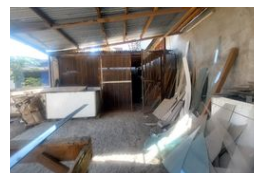
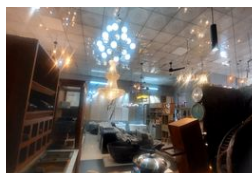
Contact **Lusaka**

260 954152925

Foxdale Court 114
1st Floor, Second Building
609 Zambezi Road
Roma
Lusaka
10101



Web Ref CL1925



ZMW12,000,000

0 0

COMMERCIAL BUILDING FOR SALE IN NDOLA

This spacious and highly versatile commercial property is superbly positioned along the prestigious President Avenue in Ndola, directly adjacent to the iconic Old Cinema. Featuring an expansive retail floor area, an integrated warehouse, a dedicated storage room, and reliable ZESCO 3-phase power, the property is perfectly equipped to accommodate a wide range of business activities—from retail and wholesale to logistics and institutional operations. Set within a high-traffic corridor and surrounded by established commercial landmarks, it offers exceptional visibility, accessibility, and signage potential. For investors or businesses seeking a

Features

Zoning Commercial

Interior
Power 3 Phase Yes

Exterior
Security Yes

Sizes
Floor Size 684m²
Land Size 684m²