



**Luke Simpanzye**  
0971838961  
luke.simpanzye@seeff.com

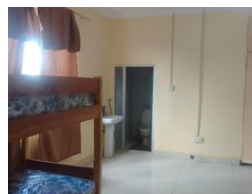
Contact **Lusaka**

**260 954152925**

Foxdale Court 114  
1st Floor, Second Building  
609 Zambezi Road  
Roma  
Lusaka  
10101



Web Ref CL278



**ZMW8,050,000**

0 0

Double storey building located in PHI along Mama Betty Road going at \$350,000.00.

This is a double storey building with six (6) shops on the ground floor and thirteen (13) rooms on the first floor; six (6) self-

## Features

**Title** Leasehold  
**Zoning** Commercial

**Sizes**  
**Floor Size** 500m²

**Extras**  
Double storey building located in PHI along Mama Betty Road going at \$350,000.00. Built-in Wardrobes Security Guard House