

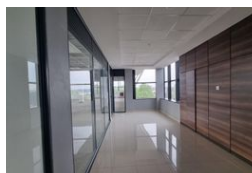
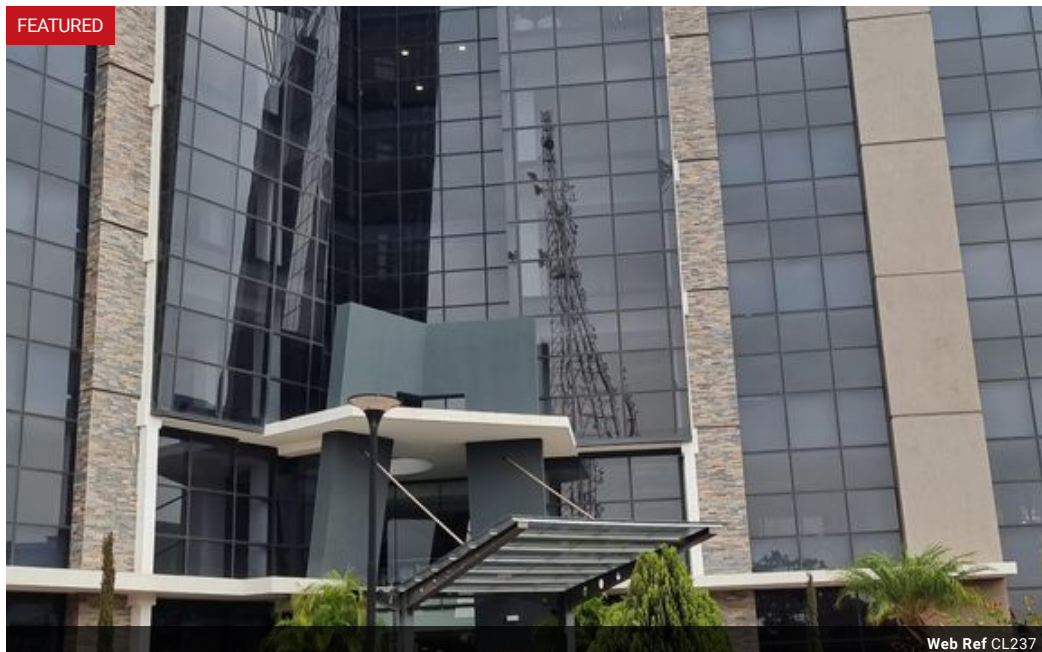


Elvira Brentnall
0968 336061
elvira@seeff.com

Contact **Lusaka**

260 954152925

Foxdale Court 114
1st Floor, Second Building
609 Zambezi Road
Roma
Lusaka
10101



POA

0 0

9,400m² Business Centre For Sale in Longacres

Available now:

Business Centre - A star shaped building with four wings - 8 floors.

Each wing being either 250 or 300 square metres.
Each floor's four wings total 1100 sqm of lettable space.
Top floor has 600 sqm.

Great modern eco-friendly design, A-grade with state of the art finishes, elevators & security system.

Superb Parking with Basement & Surface parking bays with about 450 slots in total giving about 50 bays per floor and 50 for visitors.

Some details on The Building :

LED Eco lighting

Features

Zoning Commercial

Sizes

Floor Size	9,400m²
Land Size	11,600m²

Extras

Security Water Tanks Lifts Guard House Extractor Fan Borehole Lobby in Building Central A/C & Heating 24 Hour Access Boomed Area Intercom